

a 1814
330
54420
5442
5986.20

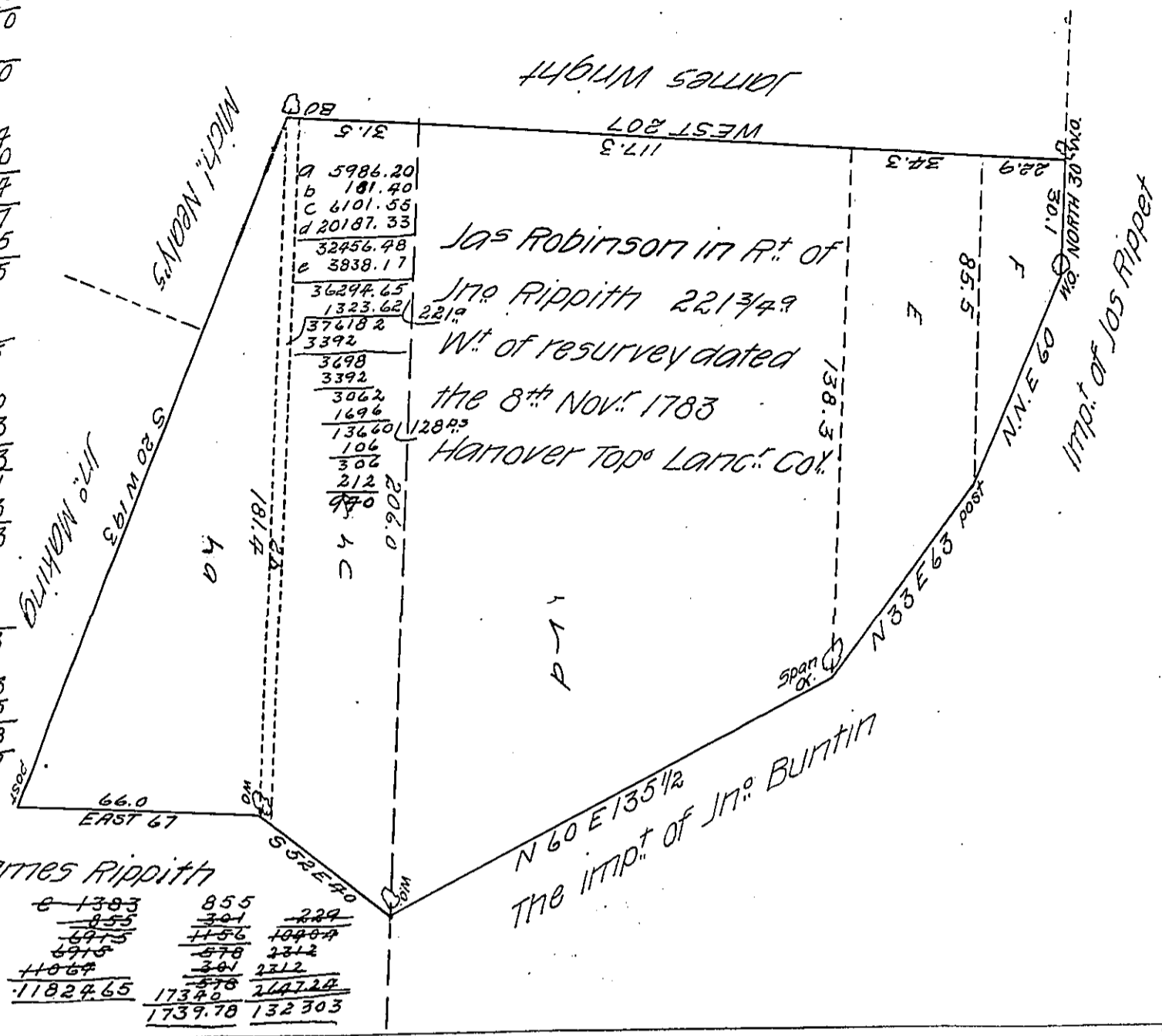
c 1814
2060
3874
1937
315
9685
1937
5811
6101.55

d 2060
1383
3443
1721
1173
5163
12047
1721
1721
20187.33

e 1383
855
2238
1119

James Rippeth

1119	8-1383	855	
343	855	301	229
3357	6975	4156	10489
4476	6975	578	2312
3357	11069	301	2312
3838.17	11024.65	17340	214724
		1739.70	132303



By virtue of a warrant dated the 1st of December Anno Domini 1737 the above described tract of land was surveyed to John Rippeth in Harrover township in Lancaster County beginning at a white oak a corner of James Rippeth thence north 60 degrees east by the improvement of John Smoddy & John Buntin 134 pches to a spanish oak thence by the improvement of Joseph Rippeth the three following courses viz N 33 degs EAST 62 per^s to a post and NORTH NORTH EAST 56 per^s to a white oak and NORTH 30 P to a white oak & corner of James Wright (1st 9^{mo} 1739)

P-Sam^l Lightfoot

IN TESTIMONY that the above is a copy of the original remaining on file in the Department of Internal Affairs of Pennsylvania, made conformably to an Act of Assembly approved the 16th day of February, 1833, I have hereunto set my Hand and caused the Seal of said Department to be affixed at Harrisburg, this twenty ninth day of August 1906

Goach Brown
Secretary of Internal Affairs.